



Fluidnews

Pipettes | Automation | Pipette Service
Summer 2017

40% OFF PIPETMAN KITS

£9.99 PIPETTE SERVICE

£7,500 PLATEMASTER

NEW NGS APP NOTES

PURIFICATION FORUM

TLC/MS INTERFACE





PIPETTE SERVICING

Back-to-base Service & Calibration Offer

Gilson Pipette Service are the experts in the repair, calibration and servicing of all makes and models of pipettes. We offer a wide range of service plans including UKAS to meet every application and budget.

Send Us Your Pipettes For Servicing - £9.99

Send any make or model of single channel pipette back to our brand new, purpose built Pipette Calibration Laboratory and we will perform a Manufacturer Calibration and Service from as little as £9.99. Just choose the appropriate level for your pipette.

£9.99
PIPETTE SERVICE
 OFFER CODE: CP0336

£9.99 PIPETTE SERVICE OFFER		
SINGLE CHANNEL SERVICE & CALIBRATION	LIST	OFFER
2.2 Service with Manufacturer Calibration	£14.98	£9.99
2.4 Service with Manufacturer Calibration	£19.25	£12.99

All parts and shipping costs are excluded. Offer excludes inLab pipette clinics. Mainland UK customers only

TO ARRANGE A SERVICE:
QUOTE OFFER CODE: CP0336

Email: serviceinfo@gilsonuk.com or Call: 0845 643 5216

Send your pipettes to our new Pipette Service Lab:
3B Humphrys Road, Woodside Estate, Dunstable, LU5 4TP

Offer valid until September 30th 2017

pipetman®

KIT

MAXIMISE YOUR PERFORMANCE & BUDGET

PIPETMAN Kits contain a complete set of Gilson pipettes, tip and accessories for the best pipetting performance at the best possible value. New 4 pipette kits are now available.

PIPETMAN L Kit - Lightweight & Comfortable

With low forces and lockable volume, PIPETMAN L helps increase daily productivity and pipette longer without fatigue.

PIPETMAN G Kit - Extremely Low Pipetting Forces

Ergonomic and easy to use, PIPETMAN G offers premium performance and comfort.



40% OFF PIPETMAN L & G KITS					
PIPETMAN KITS	ORDER REF	PIPETTES	TIPS	LIST	40% OFF
NEW: PIPETMAN L 4-pipette Kit*	F167370	P2L, P20L P200L P1000L	DL10 D200 D1000	£779	£467.40
PIPETMAN L Kit	F167350	P20L P200L P1000L	D200 D1000	£631	£378.60
PIPETMAN L Microvolume Kit	F167550	P2L P10L P100L	DL10 D200	£631	£378.60
NEW PIPETMAN G 4-pipette Kit*	F167360	P2G, P20G P200G P1000G	DL10 D200 D1000	£684	£410.40
PIPETMAN G Kit	F167900	P20G P200G P1000G	D200 D1000	£570	£342.00
PIPETMAN G Microvolume Kit	F167800	P2G P10G P100G	DFL10ST DF100ST	£570	£342.00

ACCESSORIES: 3 (*4) SINGLE pipette holders, 1 Gilson Guide to Pipetting, 1 Two Minute Inspection Poster, Gilson Lifetime Warranty

40% OFF PIPETMAN KITS
QUOTE OFFER CODE: GIL143W

Call: 0845 5196 872 or Email: orders@gilsonuk.com
 Order Online: www.gilsonuk.com/promotions

Not to be used in conjunction with any other offer or contract discount. Offers valid until 31/08/17 to UK mainland customers only.

40% OFF
PIPETMAN L & G KITS
 OFFER CODE: GIL143W





pipetman®

M

ELECTRONIC PIPETTE THAT GUARANTEES PERFORMANCE & ACCURACY



Take the stress and strain out of repetitive, time consuming pipetting routines with the new electronic PIPETMAN M.

PIPETMAN M combines the simplicity of a manual pipette with the consistency of electronic liquid handling. The PIPETMAN M range has been designed for guaranteed accuracy and precision in both standard and repetitive pipetting modes for reliable sample preparation.

Pipette With Less Effort & More Comfort

Simple-to-use, motorised pipette - two button operation.

Lightweight with virtually zero pipetting forces for hours of pipetting comfort.

Ultimate Consistency

Reproducibility is key in research. With PIPETMAN M you can feel confident that variability among users is minimised.

Ultimate Control & Customisable

With a streamlined user interface, five pipetting modes, including protocol customisation, control of your sample prep is at your fingertips.

Advanced drag and drop software for creating pipetting protocols easily and rapidly.

SINGLE CHANNEL

ELECTRONIC MULTICHANNEL

Increase Your Productivity

Achieve more during your working day with an electronic multichannel pipette that fits around your workflow.

Less repetition equals faster time to results.



33% OFF PIPETMAN M SINGLE CHANNELS

MODEL / VOLUMES	PART NUMBERS	LIST PRICE	33% OFF
P10M (0.5-10µL)	F81022	£383.00	£256.61
P20M (2-20µL)	F81023		
P100M (5-100µL)	F81013		
P200M (20-200µL)	F81024		
P300M (20-300µL)	F81014		
P1200M (100-1200µL)	F81015		
P5000M (500-5000µL)	F81016		
P10mLM (1-10mL)	F81017		

33% OFF PIPETMAN M MULTICHANNELS

P8 x 10M (0.5-10µL)	F81025	£758.00	£507.86
P8 x 20M (1-20µL)	F81027		
P8 x 100M (10-100µL)	F81018		
P8 x 200M (20 -200µL)	F81029		
P8 x 300M (10-300µL)	F81031		
P8 x 1200M (50-1200µL)	F81020		
P12 x 10M (0.5-10µL)	F81026	£875.00	£586.25
P12 x 20M (1-20µL)	F81028		
P12 x 100M (10-100µL)	F81019		
P12 x 200M (20 -200µL)	F81030		
P12 x 300M (10-300µL)	F81032		
P12 x 1200M (50-1200µL)	F81021		

33% OFF ALL PIPETMAN M PIPETTES

QUOTE OFFER CODE: GIL142W

Call: 0845 5196 872 or Email: orders@gilsonuk.com

Order Online: www.gilsonuk.com/promotions

33% OFF
PIPETMAN M SINGLE & MULTICHANNELS
 OFFER CODE: GIL142W

Not to be used in conjunction with any other offer or contract discount. Valid until 31/08/17 to UK mainland customers only.





platemaster®

FAST MANUAL MICROPLATE PIPETTING



PLATEMASTER is an amazingly easy-to-use, compact and accurate solution for high throughput pipetting of 96- and 384-well microplates.

Visit gilsonuk.com and search "platemaster"

£7,500

with free tips to the value of £500

OFFER CODE: CP0362

Save Time And Increase Your Productivity

With minimal setup you can fill 96 or 384 well plates in less than one minute by reducing the number of manipulations for filling a microplate.

Simplifies Sample Prep

PLATEMASTER requires no programming, no power and minimal training, so you can start pipetting right away.

Convenient For Any Microplate Application

Achieve accuracy and precision on the bench or under the hood.

QUOTE OFFER CODE: CP0362

Call: 0845 5196 872 or Email: info@gilsonuk.com



UK PURIFICATION FORUM EVENT

10th October 2017 - BOOK NOW

As leaders in the world of Preparative HPLC since the inception of the technology, Gilson are inviting you to attend an exclusive one-day purification forum. This is a unique opportunity for scientists to communicate their exciting discoveries and to learn about new extraction and purification applications and techniques.

The event will take place at our new Gilson Technology Centre in Dunstable on Thursday 10th October 2017.

TOPICS INCLUDE

- Optimizing Counter Current Chromatography (CCC) for Natural Product Purification
- Purification of Chiral compounds by HPLC
- Examples of CCC and HPLC Purification assisted by MS

INVITED SPEAKERS INCLUDE

- Dr Gregoire Audot, Gilson Purification Centre
- Dr Ian Garrard, Brunel University

**REGISTER NOW TO SECURE YOUR PLACE
PLACES ARE LIMITED**

Contact us with your name and contact details:
Email: info@gilsonuk.com

REGISTER NOW

Email our team on
info@gilsonuk.com





pipetmax[®]

MAKING LAB LIFE EASIER FOR RESEARCHERS

PIPETMAX is an easy-to-use, automated liquid handling platform that performs the mundane task of sample preparation for you! Enjoy more freedom away from the bench and focus on what's important — value-added tasks and your next discovery. With a multitude of applications at your disposal, PIPETMAX increases the reproducibility and pace of your experiments.

- Standard kit methods from any manufacturer, MagBead methods, custom methods
- Various samples: tissue culture, microorganisms, body fluids, tissues etc.
- Small reaction volumes
- Many types of labware and devices: 96, 384-well microtiter, strip plate, cell culture formats
- Easy configuration and run with a simple, touchscreen interface

Application Versatility

PIPETMAX will let you advance your science and increase the pace of your experiments. Since you won't be tied down by routine pipetting tasks, you will be able to focus on what is really important to your research - scientific analysis and publications. PIPETMAX can run a multitude of different applications.

- qPCR
- PCR
- ELISA
- Kinase assays
- Cell based assays
- NGS library preparation
- Protein assays
- Custom LH
- Enzymatic reactions

MAXimize Consistency

with the precision and accuracy only an automated lab assistant can provide.

MAXimize Capability

and increase your lab's pace by making procedural errors a thing of the past.

MAXimize Options

with a platform-independent solution that works with a variety of different reagents and kits.



MAXimize Space

with a solution that fits on your lab bench and works next to you.

MAXimize Traceability

with simple, automated run reports.

REQUEST DEMO OR QUOTE

Email our team on info@gilsonuk.com or call 0845 5196 872

DOWNLOAD NEW PIPETMAX NGS APPLICATION NOTES:

- *Automation of the Illumina[®] Nextera[®] XT DNA Library Preparation Kit*
- *Automation of the Agencourt[®] AMPure[®] XP PCR Purification System*

Download app notes at www.gilsonuk.com/pipetmax





TLC-MS Interface

TAKE THE GUESS WORK OUT OF TLC

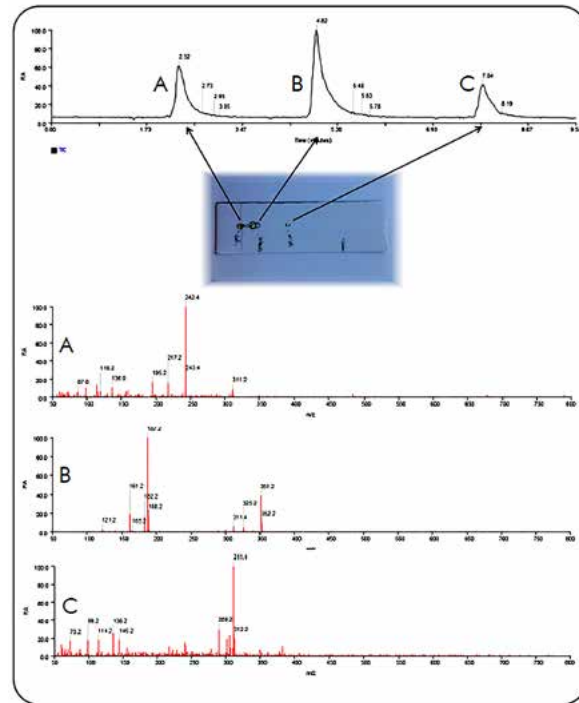
The new CAMAG TLC-MS Interface 2 is the second generation module for the pioneering concept of hyphenating TLC with mass spectrometry for fast and unequivocal substance identification.



Visit gilsonuk.com and search "verity"

MORE INFO?

Email our team on info@gilsonuk.com or call 0845 5196 872



Increase the Pace of your Discovery with the Verity 1900 MS

The CAMAG TLC-MS Interface 2 allows for rapid and contamination free elution of TLC/HPTLC zones with online transfer to the Gilson VERITY MS, a low cost, compact, high quality, chip-based, single quad detector.

Fast, Compact and Economical

Positive Pressure SPE

FOR FASTER, MORE REPRODUCIBLE DATA



The Gilson GX-241 ASPEC is a compact, error free automated Solid Phase Extraction system for improved result reproducibility. Thanks to its positive pressure technology.

Low Cost Workhorse For Reliable Results

- Free up your time for more important tasks.
- Eliminate potential operator error.
- Ideally suited where bench space or budgets are limited.

NEW APP-NOTES

- Mycotoxins in food and beverages
- Aflatoxins in milk
- Pesticides in tea
- Hop acids in beers

Visit gilsonuk.com and search "GX241"

SPECIAL OFFER PRICE - LIMITED TIME MANUAL SYSTEMS STARTING FROM ONLY £4,000

Get a quote or request a free demo:
Call 0845 5196 872 or email: info@gilsonuk.com

SYSTEMS FROM

£4,000

SPECIAL OFFER GET A QUOTE





**BECOME A CERTIFIED
PIPETTING EXPERT**

One-Day Pipetting Training Course

Join the Gilson family of experts and become a proficient and skilled certified pipetting user. With a series of one-day educational training courses, learn essential skills and knowledge that will allow you to pipette accurately and effectively.

TOPICS INCLUDE

- Good pipetting practice and verification procedures
- Manual and automated pipetting techniques
- Basic pipette verification & maintenance training
- How to pipette difficult liquids
- Reverse and touch off pipetting

REGISTER YOUR INTEREST - EMAIL NOW

PLACES ARE LIMITED, DATES TO BE CONFIRMED

Email your details to info@gilsonuk.com to secure your place.
We will then confirm dates and venues

COMING SOON

Register Your
Interest NOW